

Transaction Designer for XML

Version 4

Quick Start Guide
Revision 1.5

CLE|E|O

RESTRICTED RIGHTS

Use, duplication, or disclosure by the Government is subject to restrictions as set forth in subparagraph (C)(1)(ii) of the Rights in Technical Data and Computer Software clause at DFARS 252.227-7013.

Manufacturer is:

Cleo Communications

180 Little Lake Drive

Ann Arbor, MI 48103

Phone: 734.913.6950

Fax: 734.913.8125

Email: salesEN@cleo.com

www.cleo.com

Support: 1.866.444.2536 or supportmi@cleo.com

Cleo Communications reserves the right to, without notice, modify or revise all or part of this document and/or change product features or specifications and shall not be responsible for any loss, cost or damage, including consequential damage, caused by reliance on these materials.

This document may not be reproduced, stored in a retrieval system, or transmitted, in whole or in part, in any form or by any means (electronic, mechanical, photo-copied or otherwise) without the prior written permission of Cleo Communications.

©2005 CLEO COMMUNICATIONS ALL RIGHTS RESERVED. CLEO IS A REGISTERED TRADEMARK OF CLEO COMMUNICATIONS. ALL OTHER BRAND NAMES USED ARE TRADEMARKS OR REGISTERED TRADEMARKS OF THEIR RESPECTIVE COMPANIES.

Table of Contents

INTRODUCTION	4
Overview	4
INSTALLATION	5
Software Prerequisites.....	5
Hardware Prerequisites.....	5
Install the Transaction Designer.....	5
InstallAnywhere Details.....	5
LICENSING	6
Obtain a License.....	6
View the License Information.....	6
Install the License	7
GETTING STARTED.....	8
Open the Sample Project.....	8
Test the Recorder	10
REMOVING THE TRANSACTION DESIGNER	11

Introduction

Overview

This Installation Guide provides first-time and upgrade installation information for the Transaction Designer. It also includes licensing, initial configuration, and testing information. It is intended to be a starting point for users of the Transaction Designer.

The Transaction Designer is one component of Cleo's *Transaction Development Kit*, a set of tools designed to simplify program access to mainframe data. This kit is composed of:

- The *Transaction Designer* (TD) – creates XML transactions.
- The *Transaction Processor* (TP) – processes the transactions in real time and provides basic API functions.
- The *Web Administration* and *Configuration Tool* – web based utilities used to set configuration parameters, provide session monitoring, and display log messages and statistics for the TP.

Other supporting documents include:

Transaction Designer User's Guide

This guide explains how to create XML transactions.

Transaction Processor Quick Start Guide

This guide explains how to get started using the Transaction Processor.

Transaction Processor Administration Guide

This document describes the functions provided by the Transaction Processor Configuration and Administration Tools.

Transaction Processor Programmer's Guide

This guide provides information about developing applications that utilize the Transaction Processor.

Installation

Software Prerequisites

Operating System: Windows 2000 Professional, Windows 2000 Server, Windows 2000 Advanced Server, Windows 2003 Server, or Windows XP Professional/Home.

Hardware Prerequisites

- CD Drive
- Memory - 256 MB Minimum Required
- Network Card/Modem
- 40 MB of free disk space

Install the Transaction Designer

1. Turn on the PC
2. Logon to Windows as an administrator.
3. Insert the Transaction Designer CD into the CD drive.
4. Browse to the CD drive (<drive>:\) in **Windows File Explorer** or **My Computer**.
5. Launch the installer by double clicking on the install icon (or install.exe).
6. The first screen introduces you to the *InstallAnywhere* program, which guides you through the installation. All instructions from *InstallAnywhere* are meant to be self-explanatory. Read and then follow the instructions as described on each screen. (See the following section for details.)

InstallAnywhere Details

InstallAnywhere walks you through a set of installation steps. These steps are displayed on the left side of the screen, and will be checked upon step completion:

1. Read the License Agreement. Select “If you agree with the license agreement”, and then click **Next**.
2. Read the Introduction Screen and then click **Next**. Choose your install folder. The program defaults to C:\TDesigner. Click **Choose** to search for (and then select) another folder location, or click **Next** to accept the default.
3. Choose a shortcut folder. Select from the list provided, or leave at the default. Click **Next**.
4. Review the Pre-Installation Summary and then click **Install**.
5. Upon completion of the install, click **Done**. Select **reboot** when the prompt asks.

Licensing

Obtain a License

To purchase a license, contact a Cleo sales representative at salesEN@cleo.com or 1-800-315-3849 x525. Provide your User ID, Host ID and Serial Number information. (The Serial Number is located on the CD case). Cleo will then provide you with a license file (**cleotd.lic**), generally via email.

The license key that is generated is bound to a single computer and a single user account and cannot be transferred to any other computer or user account. The Cleo licensing program automatically incorporates the computer's unique system name and user name into the software license key.

View the License Information

1. Invoke the Transaction Designer. Without a license, the Transaction Designer will display the following message:

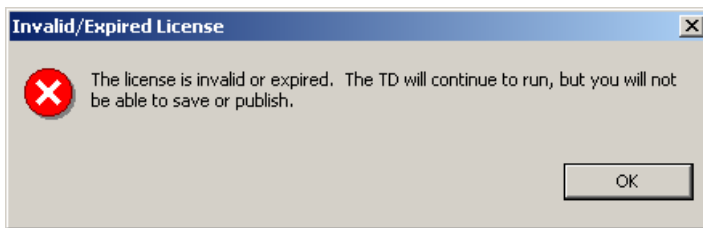


Figure 1: Invalid/Missing License

2. Click **OK**. A dialog similar to the following is displayed:

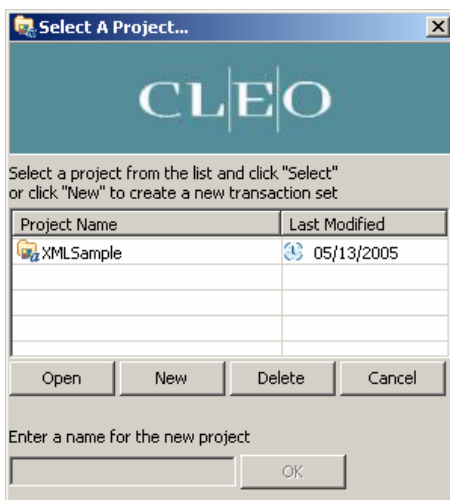


Figure 2: Select a Project window

3. Double click on the XMLSample Project, or click “New” to create a new project.
4. Click on Help -> About
5. Record the Host ID, User ID and serial number located on the CD’s jewel case and forward to Cleo.(see Figure 2)

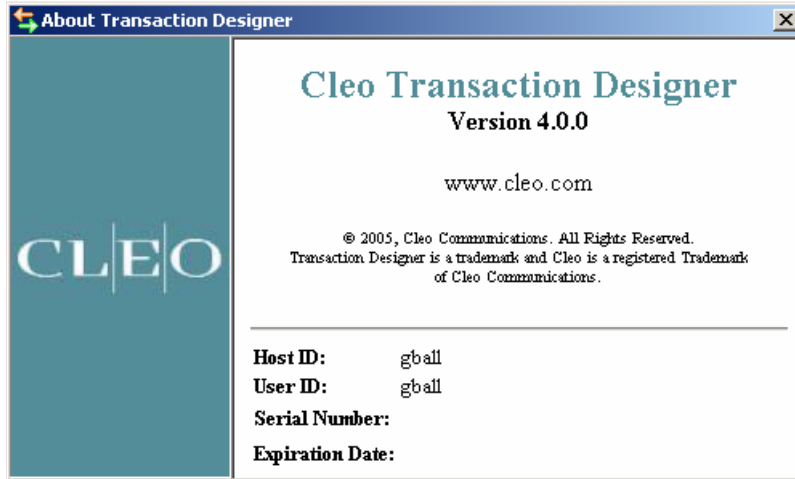


Figure 3: Host Id Information

6. Close the dialog box by clicking .

Install the License

After you receive the license file from Cleo, perform the following:

1. Move/copy the license file (**cleotd.lic**) to the appropriate folder. If you’ve installed the Transaction Designer in its default location, the path will be:

c:\TDesigner\plugins\com.cleo.td_x.x.x (where x.x.x is the version number)

2. The next time you launch the Transaction Designer, it will read the file and validate the license. You may confirm this by clicking on **Help/About** from the initial Transaction Designer screen.

Getting Started

To introduce you to the Transaction Designer, Cleo has created a sample transaction so that you can quickly become familiar with the capabilities of the Transaction Designer. Please refer to the “Transaction Designer User’s Guide for XML” for details on how the various options and features work.

Open the Sample Project

1. Launch the TD (e.g., From the Start Menu: **TDesigner|TransDesigner**).
2. On startup, the following appears. If the TD fails to start, see the Transaction Designer User’s Guide Appendix A: Troubleshooting, for more information. From the list of Project names, select “XMLSample” and click “Open”.

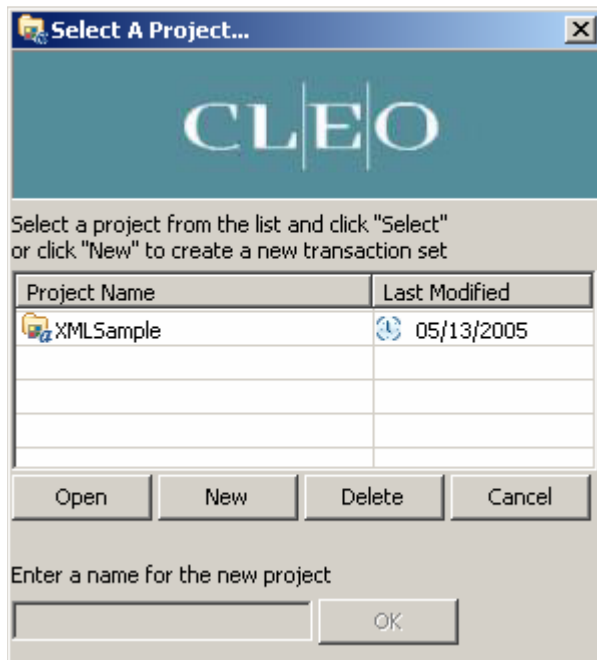


Figure 4: Select a Project window

3. A screen similar to that shown in Figure 5 will be displayed. See the Transaction Designer User's Guide for a functionality description of the various components of the screen.

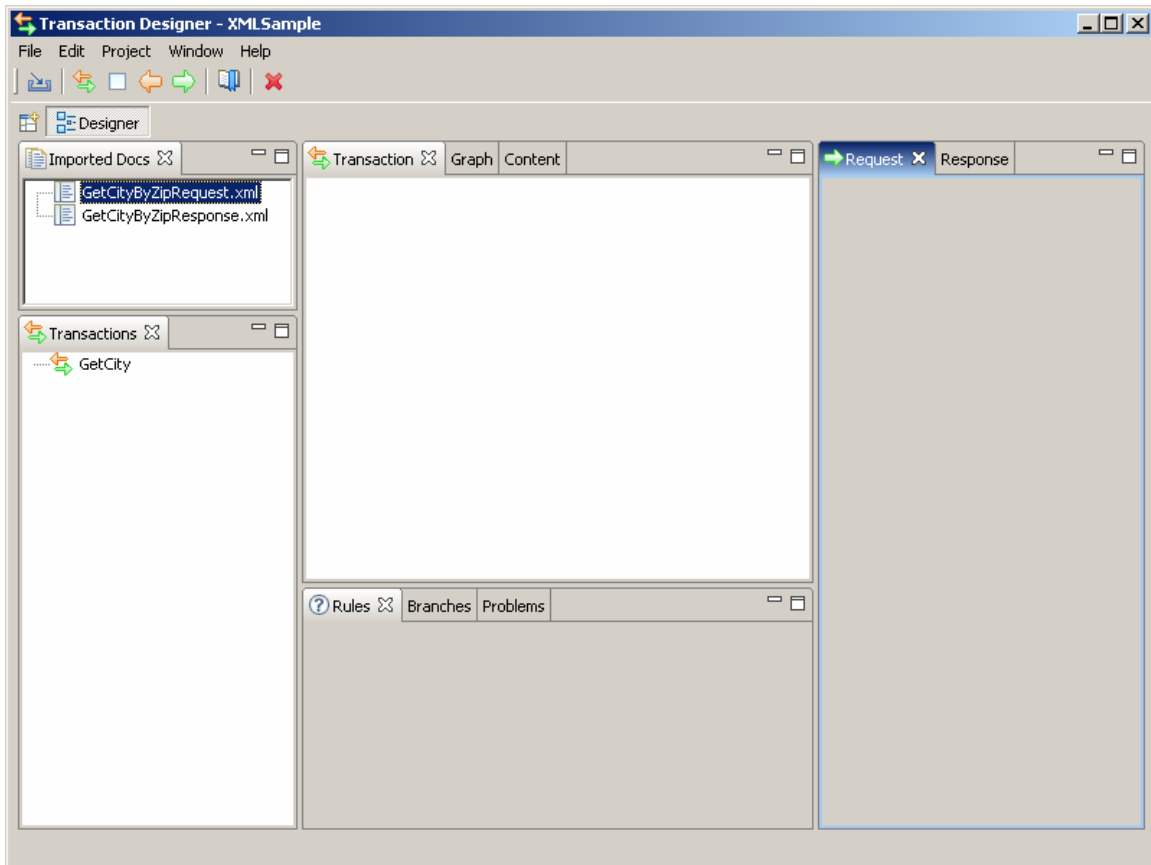


Figure 5: Transaction Set "XMLSample"

Test the Recorder

1. Click on Window -> Open Perspective -> Recorder Perspective
2. In the Http View click on the “XMLSample” connection (a yellow arrow should appear next to the connection)

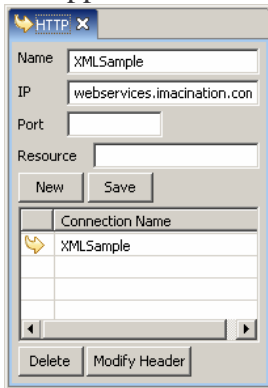


Figure 6: Http View

3. Highlight GetCityByZip.xml in the Imported Docs view.
4. Click “Send XML” on the recorder and you should see the response xml in green in the window below.

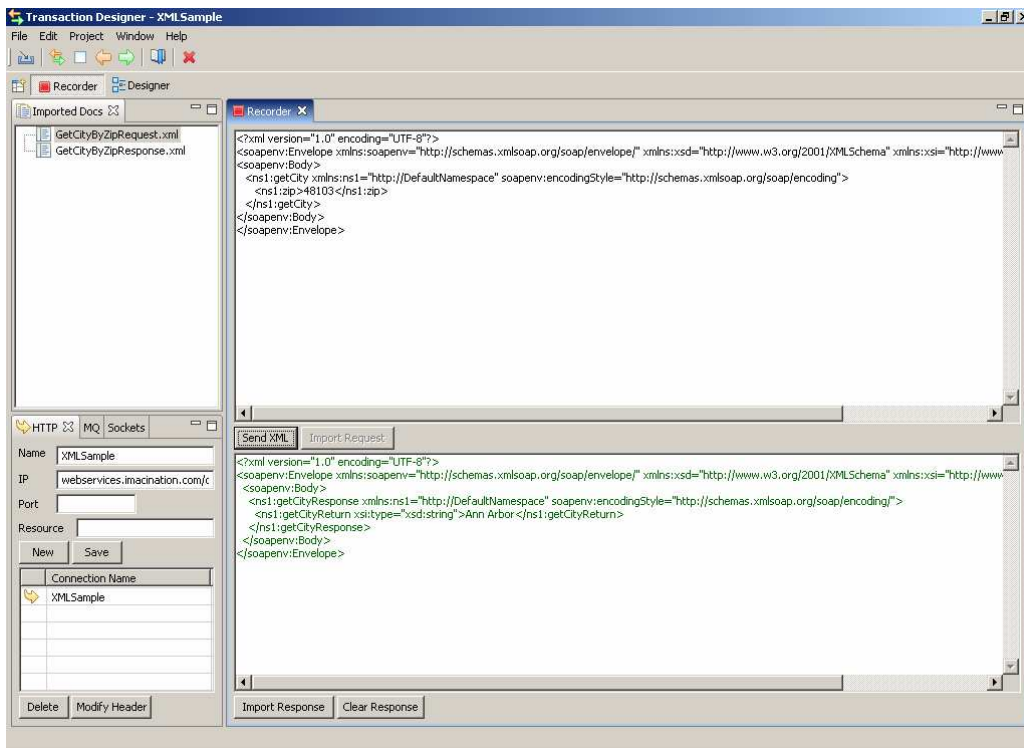


Figure 7: Recorder View with Response XML

Removing the Transaction Designer

1. Launch Add/Remove Programs in the Control Panel.
2. Click Change/Remove under Cleo Transaction Designer (XML) to remove the Transaction Designer.
3. Follow the instructions displayed on the screen. When the removal of the Transaction Designer has been completed, **reboot** your PC.

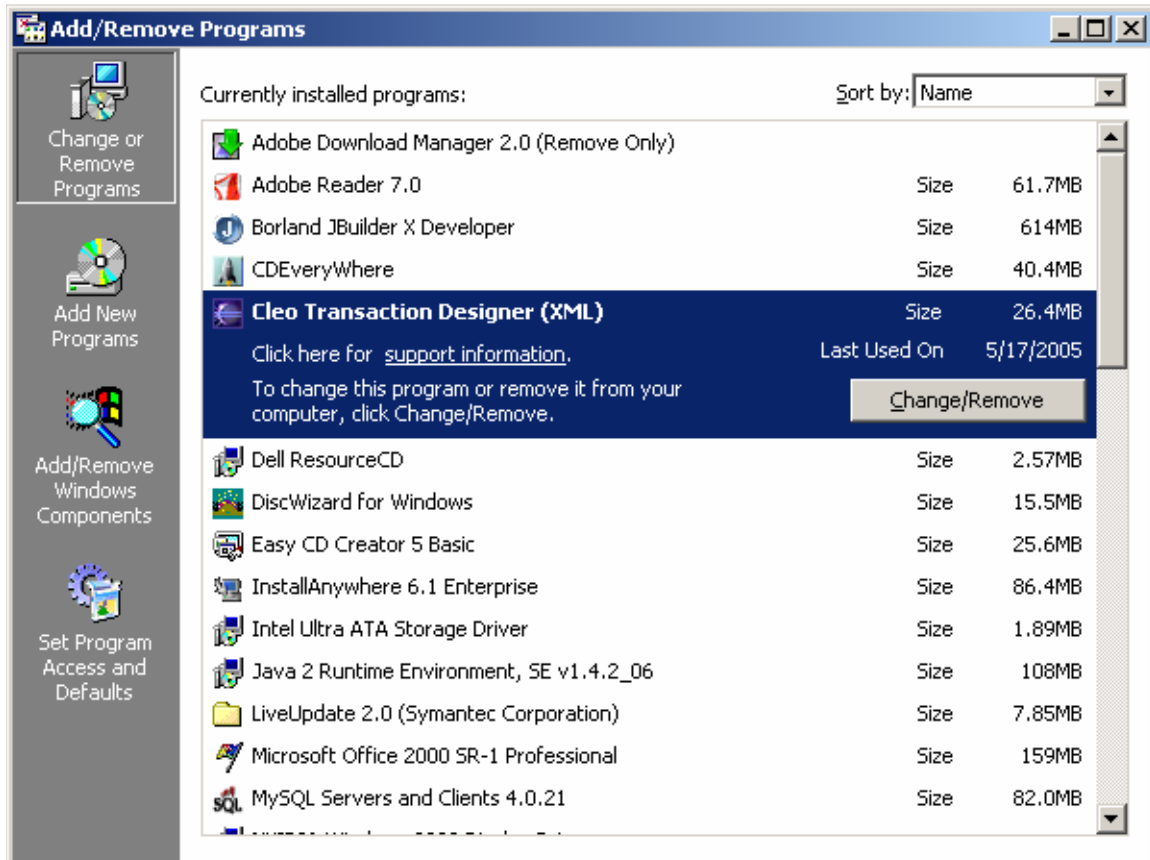


Figure 8: Add/Remove Programs