

### Configure SSL on the Device

Go to 'Security' > 'SSL' and select the 'Create New Certificate' button.

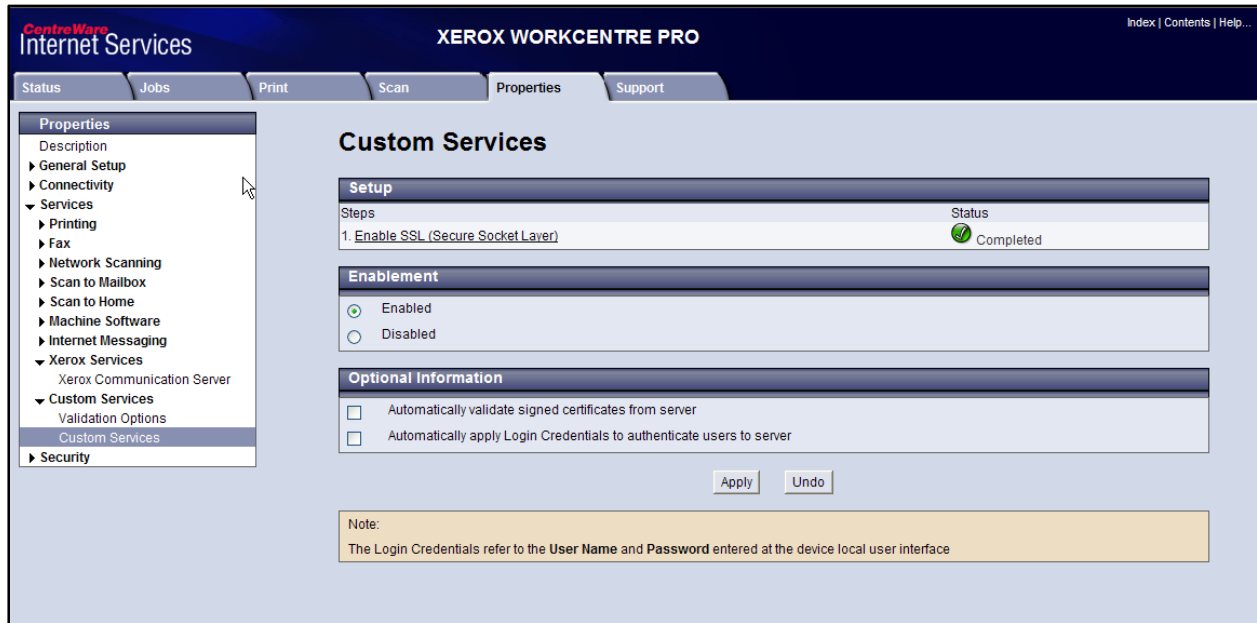


Verify that 'Self Signed Certificate' is selected and then select 'Continue'.



Go to 'Services' > 'Custom Services' > 'Custom Services'.

Under 'Enablement' select 'Enabled' and click 'Apply'



## Configure Stream EIP XML File

Locate C:\Stream\Support\Bin\StreamEIP-1.xml from the Stream Server.

Update the IP addresses in the file to be the same as the Stream Server.



## Add Cleo's Stream Connect to the Device

Run C:\Stream\Support\Bin\ Xerox.EIPSDK.RegistrationApp.exe from the Stream server.

Update the following fields:

DNS or IP – IP address of Xerox device from previous step

User Name – Admin user for Xerox device (default is either “admin” or “1111” depending on type of device)

Password – Password for admin account on Xerox device (default is either” 1111” or “x-admin” depending on type of device)

Select the ‘Connect’ button.

**Registration Client**

**EIP SDK Registration Tool**

Device Connection

DNS or IP:

User Name:

Password:

Uri: \_\_\_\_\_

RegistrationAPI Version: \_\_\_\_\_

Device Cert Trust

- trust cert name
- trust cert auth
- trust expired cert

Name	checksum
------	----------

*selected registration options:*

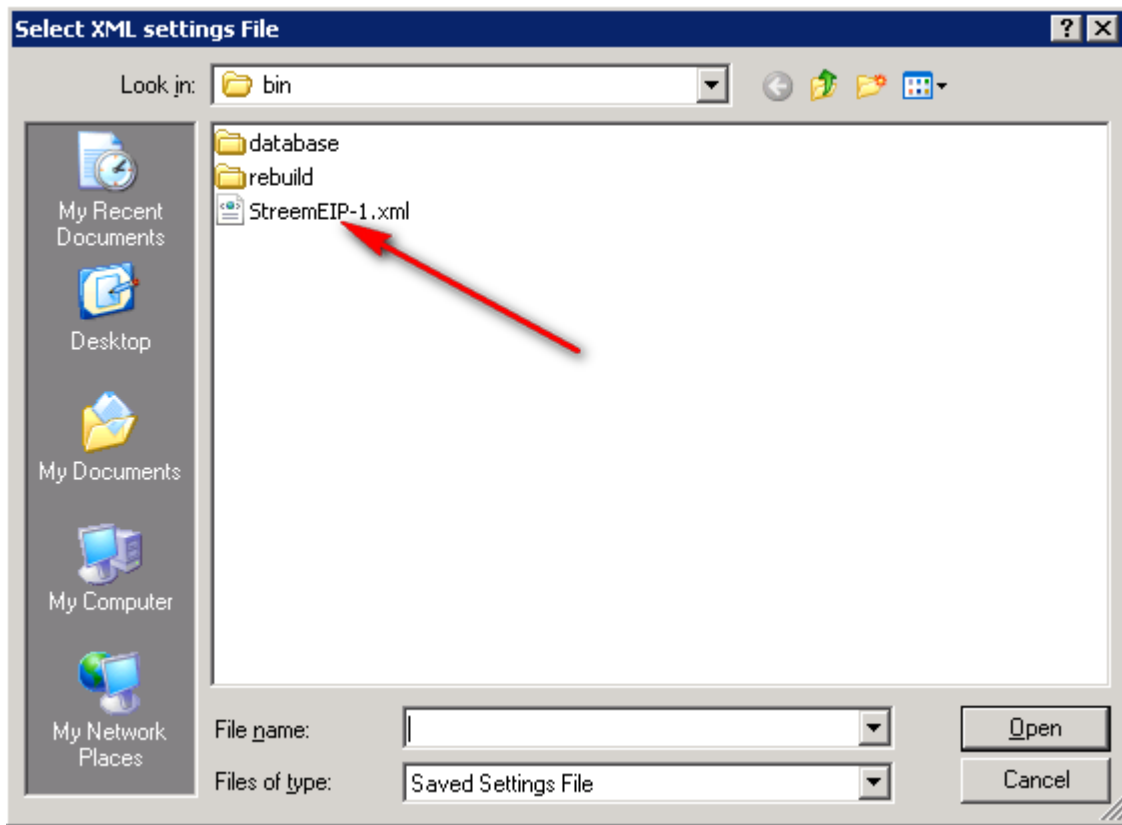
Select the 'Create New' button.

The screenshot shows the 'Registration Client' window with the title 'EIP SDK Registration Tool'. It contains several input fields: 'DNS or IP' (10.10.5.106), 'User Name' (admin), and 'Password' (masked with asterisks). A 'Connect' button is located below the password field. To the right, the 'Device Cert Trust' section has three checked checkboxes: 'trust cert name', 'trust cert auth', and 'trust expired cert'. Below these fields, the URL 'https://10.10.5.106/webservices/office/cuiregistration/1/' and 'Registration API Version: 1.0.1' are displayed. At the bottom, there are 'List' and 'Create New' buttons, with a red arrow pointing to the 'Create New' button. Below the buttons is a table with columns 'Name' and 'checksum', which is currently empty. To the right of the table are 'View', 'Update', and 'Delete' buttons, and a 'Close' button at the bottom right.

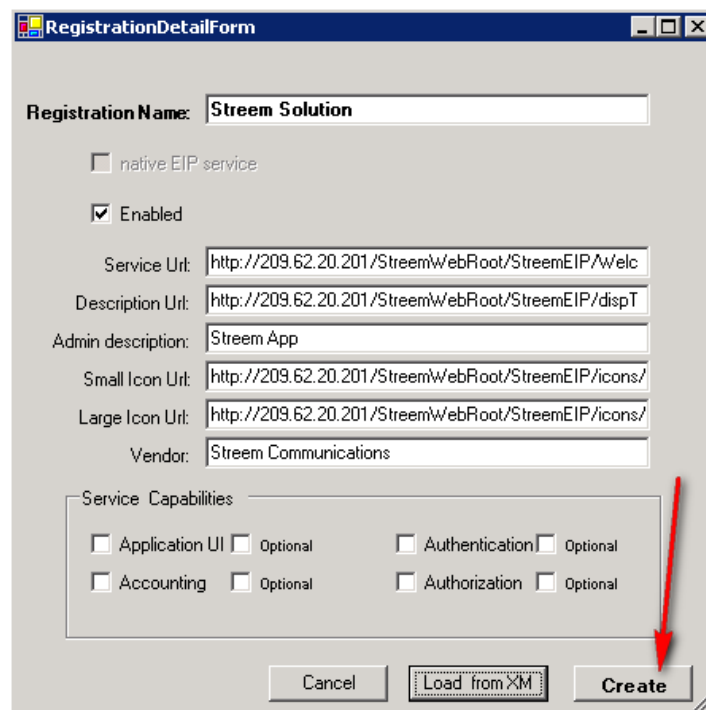
Select the 'Load from XM' button.

The screenshot shows the 'RegistrationDetailForm' window. It features a 'Registration Name' input field at the top. Below it are several checkboxes: 'native EIP service' (unchecked), 'Enabled' (checked), and a 'Service Capabilities' section with four pairs of checkboxes: 'Application UI' (unchecked) and 'Optional' (unchecked), 'Accounting' (unchecked) and 'Optional' (unchecked), 'Authentication' (unchecked) and 'Optional' (unchecked), and 'Authorization' (unchecked) and 'Optional' (unchecked). Below the checkboxes are several input fields for 'Service Url', 'Description Url', 'Admin description', 'Small Icon Url', 'Large Icon Url', and 'Vendor'. At the bottom, there are 'Cancel', 'Load from XM', and 'Create' buttons, with a red arrow pointing to the 'Load from XM' button.

Browse to the XML file that was modified in previous step.



Select the 'Create' button.



Select the 'Close' button.

**Registration Client**

**EIP SDK Registration Tool**

Device Connection

DNS or IP: 10.10.5.106

User Name: admin

Password: \*\*\*\*\*

Connect

Device Cert Trust

trust cert name

trust cert auth

trust expired cert

Connect

Url: https://10.10.5.106/webservices/office/cueregistration/1/

RegistrationAPI Version: 1.01

List

Create New

Name	checksum
Stream Connect	1930519972

selected registration options:

View

Update

Delete

Close