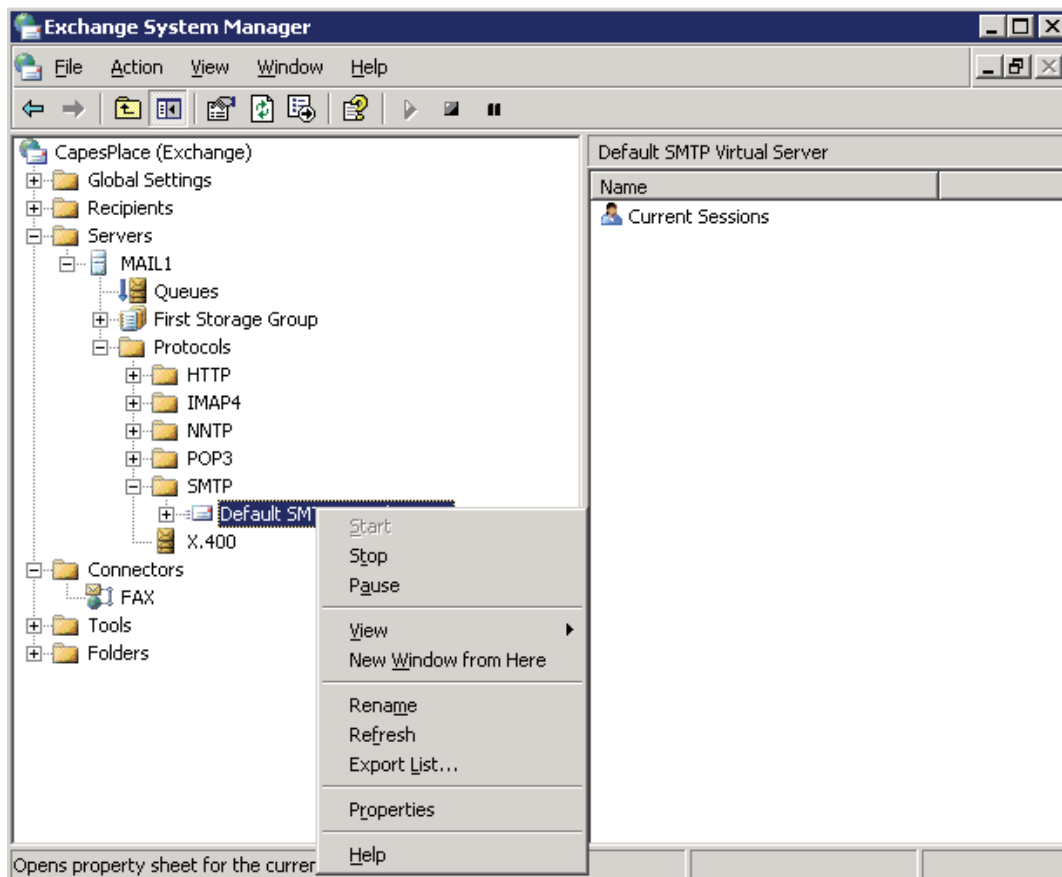




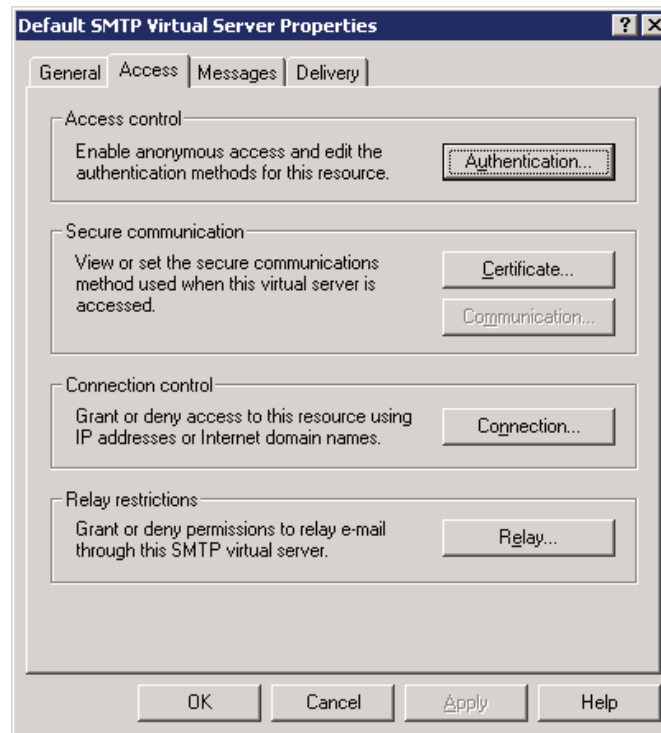
2003 Exchange Relay

In order to use Stroom Alert to its full capabilities you'll need to enable relaying. Stroom's SMTP server will talk to your Exchange server, and your Exchange server will send out e-mail, text, or pager broadcasts. If you do not want to send out external e-mail broadcasts the relay connector will not be needed. Telephone, cell phone, and fax broadcasts will not use the relay connector. Text messaging, pager, and e-mail broadcasts will use the relay connector.

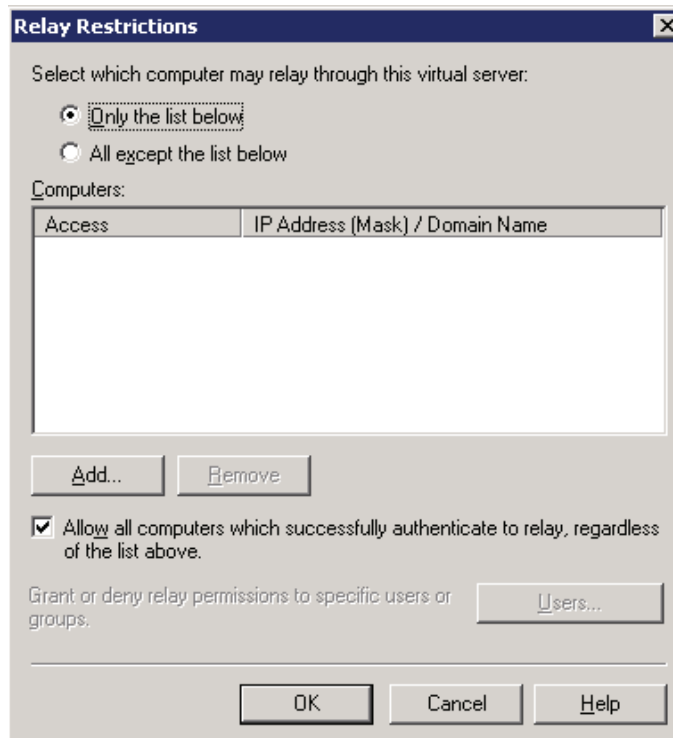
1. Open "Exchange System Manager". Expand "Servers then SMTP" you'll need to "right click" on the exchange server being used with stream and select "properties".



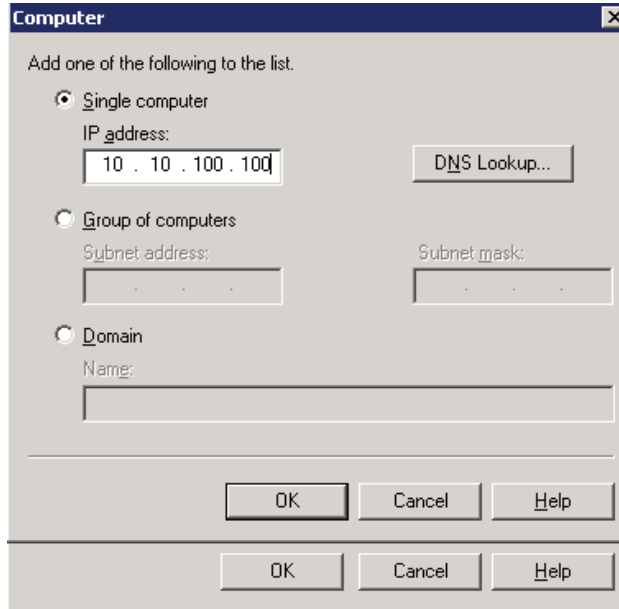
2. Once you're in the "Default SMTP Server Properties" select the "Access" tab and click "Relay".



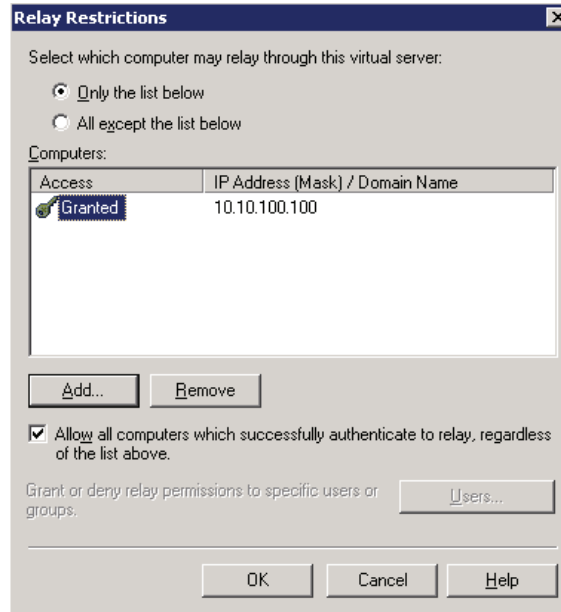
3. You should see the "Relay Restrictions" dialog box now, select "Add".



4. Make sure that “Single Computer” is selected. Now you may add the “IP Address of Your Stream server”. Once you’ve added your Stream Server select “OK”.



5. Select “OK”. You’ve now granted the Stream Server Access to your exchange server.



6. If you have a backup Stream Server follow steps 3 – 5 again using the backup server’s “IP Address”.