

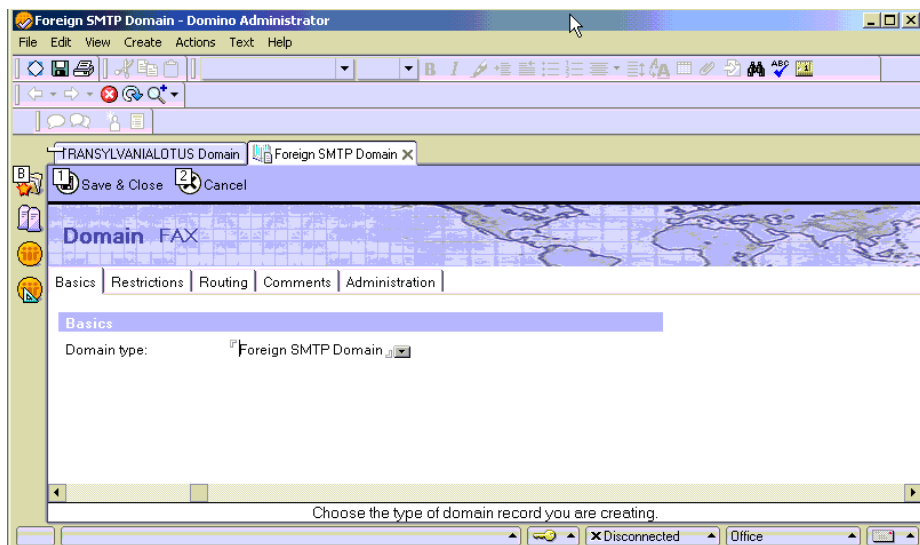


## Lotus Notes 6.5 SMTP Connector for Cleo's Stream Fax

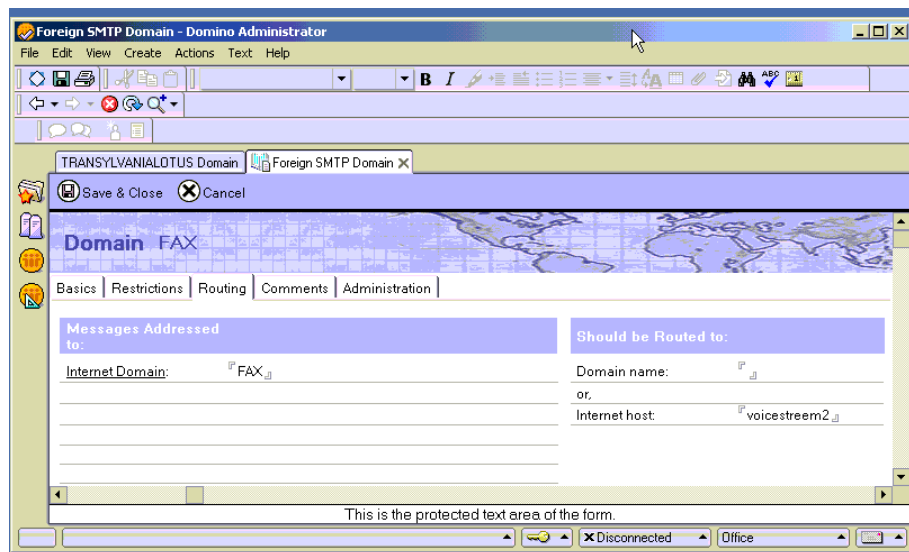
Create a Foreign SMTP Domain

Domino Administrator > Configuration > Messaging > Domains

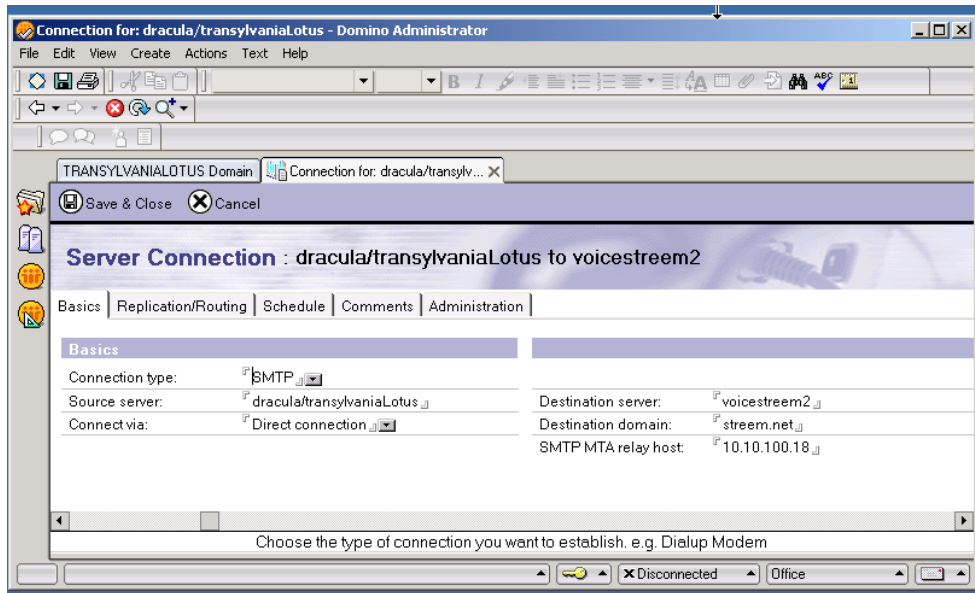
1. Choose Foreign SMTP Domain from the Domain Type drop down



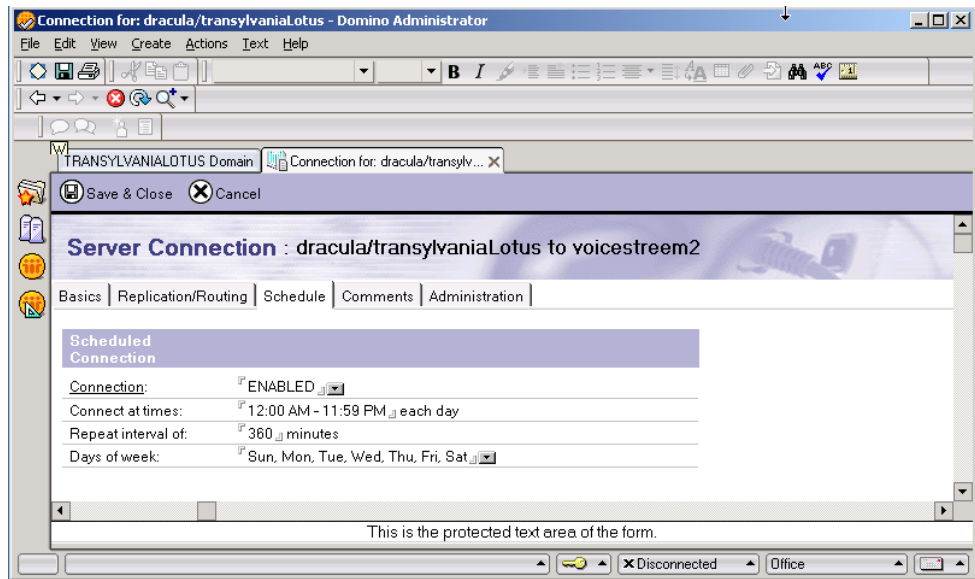
2. On the Routing Tab, set the Internet domain to "FAX" or variation thereof and set the Internet host to the Stream SMTP Server host name.



3. Save and close the Domain
4. Create a new connection document (Configuration > Messaging > Connections)
5. Set the connection type to SMTP
6. Set the source server to the Lotus server
7. Set the destination server to the Stream SMTP Server
8. Set the destination domain to the domain tab of the SMTP Server in Stream
9. Set the SMTP MTA relay host to the IP Address of the Stream SMTP Server



10. On the Schedule tab, set the connect at times to all day



11. Save and Close

12. On the Server configuration Choose MIME -> Advanced -> Advanced Outbound Message Options. Change the RFC822 phrase handling to "Use CN as phrase" This will allow the users name to appear on the cover page in the "From" field.

