



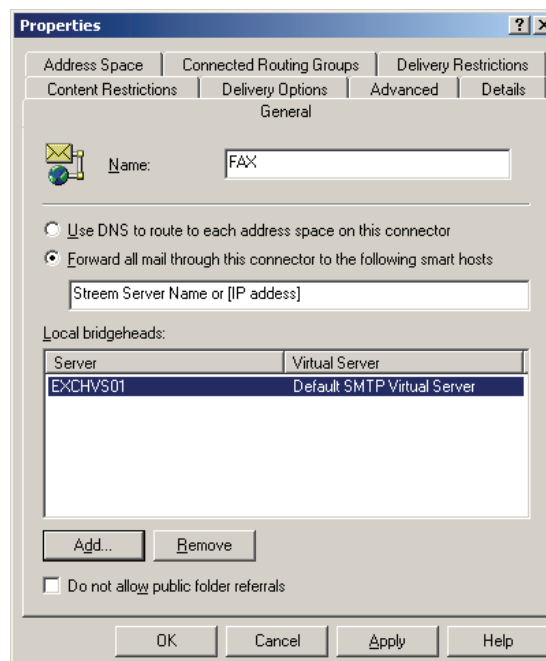
## Microsoft Exchange 2000/2003 Configuration for Stream Fax Using Child Domain

This configuration is used when it is necessary to send faxes using the [551212@fax.stream.net](mailto:551212@fax.stream.net) format. Mostly used when sending faxes using a custom application, scan to email devices, or when using a mail client other than Outlook.

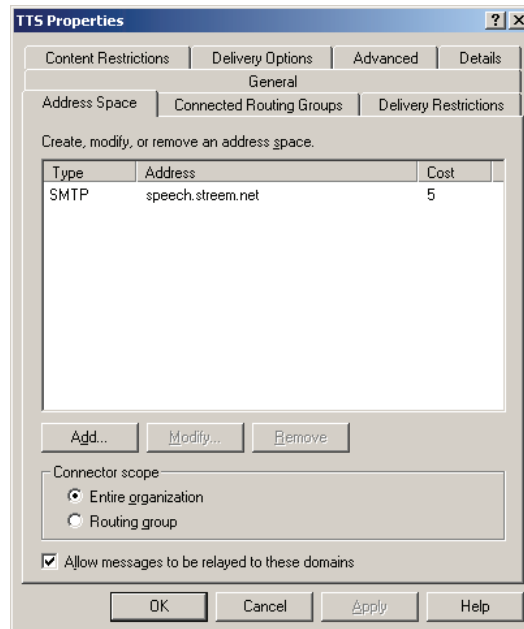
In order to route outbound email to a child domain, a simple SMTP connector is required on the Microsoft Exchange Server. This connector routes all messages destined to a “fax” type sub domain to the Stream Server for conversion and processing via SMTP. Inbound faxes are handled by the Stream server and sent to Exchange recipient’s primary SMTP address via SMTP.

### Exchange 2000/2003 Connector Setup:

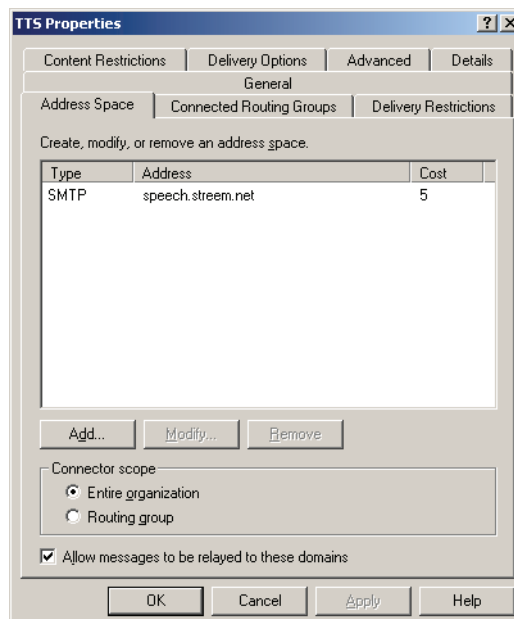
1. From the Connectors folder in the Exchange Manager, select New SMTP Connector
2. Enter a name for the connector – Stream standard is “FAX”
3. Add the Stream Server name or IP address (using []) as the smart host
4. Add the bridgehead server(s)



1. From the Address Space tab, Add an SMTP address space
2. Set the cost to 1
3. Set the address to the domain (ex. fax.streem.net)



1. Select Entire organization



2. Click on Apply and OK.

This completes the Exchange configuration necessary for Streem to handle messages to the child domain.